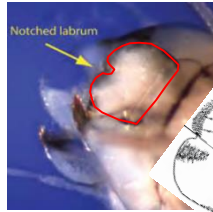
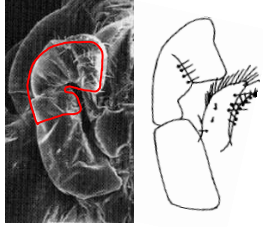


Ephemeroptera: Baetidae

- from keys and descriptions in Merritt, Cummins & Berg 2008, and EPA-260-R-08-014 2008 report; uncredited online photos; by M. Dobrin, 2017

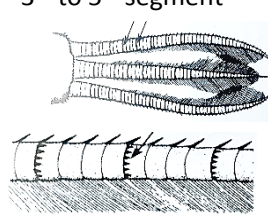
Centroptilum – *Procloeon* – *Cloeon* - *Callibaetis*

Apex of labial palps simple and truncate

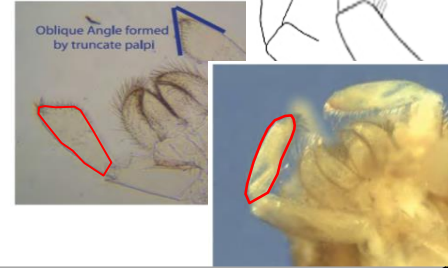


Notched labrum
Labrum with small, median notch along anterior margin

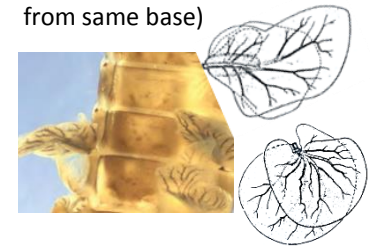
Caudal filaments with distinct bands every 3rd to 5th segment



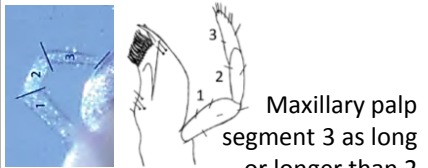
Apex of labial palps not simple and truncate



Compound gills present (often appear as 2 separate gills arising from same base)

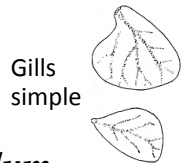


Incisors of mandible usually separated to base

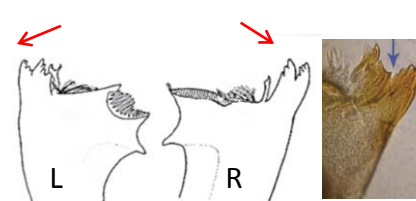


Maxillary palp segment 3 as long or longer than 2

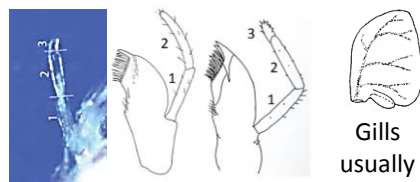
Cerci w/ lateral setae absent from distal ¼



Centroptilum



Incisors of mandible usually separated to < ½ distance to base

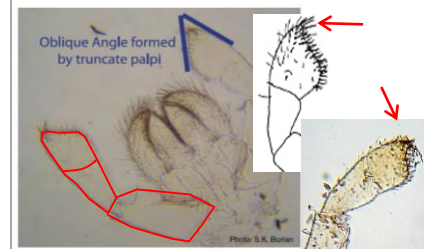


Maxillary palp segment 3 shorter than 2 (when present)

Gills usually compound

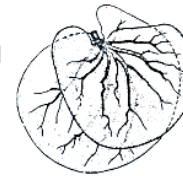
Cerci w/ lateral setae usually present to tip

Procloeon



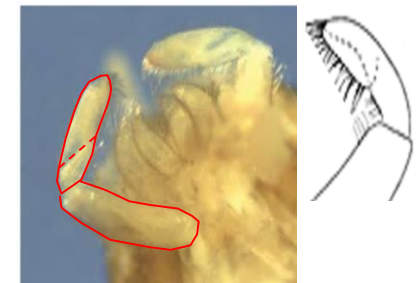
Labial palps 3-segmented, obliquely truncate

Gill recurved flaps fold dorsally



Hind wing pads absent

Cloeon dipterum



Labial palps appear 2-segmented, long & spoon-shaped

Gill recurved flaps fold ventrally



Hind wing pads present

Callibaetis

Ephemeroptera: Baetidae

- from keys and descriptions in Merritt, Cummins & Berg 2008, and EPA-260-R-08-014 2008 report; uncredited online photos; by M. Dobrin, 2017

Centropetulum

Apex of labial palps **simple** and **truncate**

Glossa

Cerci with distinct bands every 3rd to 5th segment

Cerci w/ lateral setae absent from distal ¼

Gills simple

Incisors of mandible usually separated to base

Maxillary palp segment 3 as long or longer than 2

Procloeon

Apex of labial palps **simple** and **truncate**

Glossa

Gills usually compound

•Cerci with distinct bands every 3rd to 5th segment

•lateral setae usually present to tip

Incisors of mandible usually separated to < ½ distance to base

Maxillary palp segment 3 shorter than 2 (when present)

Cloeon dipterum

Oblique Angle formed by truncate palpi

Labial palps 3-segmented, **obliquely truncate**

Hind wing pads absent

Gill recurved flaps fold **dorsally**

Callibaetis

• Labial palps appear 2-segmented; **long & spoon-shaped**

Hind wing pads **present**

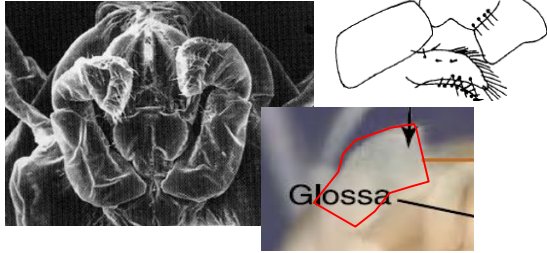
Gill recurved flaps fold **ventrally**

Ephemeroptera: Baetidae

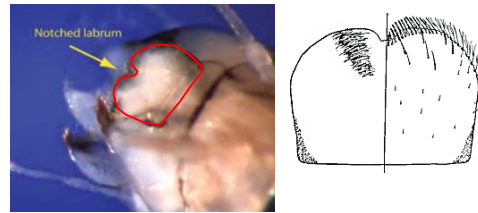
Centroptilum vs. *Procloeon*

- from keys and descriptions in Merritt, Cummins & Berg 2008, and EPA-260-R-08-014 2008 report; by M. Dobrin, 2017

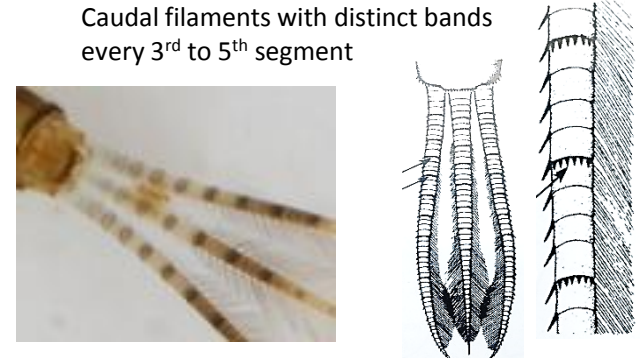
Apex of labial palps
simple and truncate



Labrum with small, median
notch along anterior margin

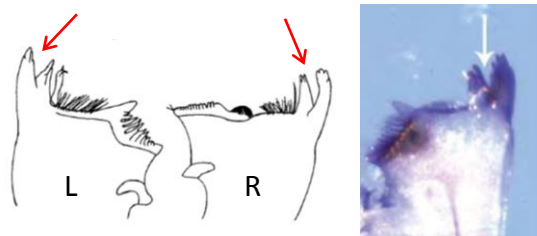


Caudal filaments with distinct bands
every 3rd to 5th segment

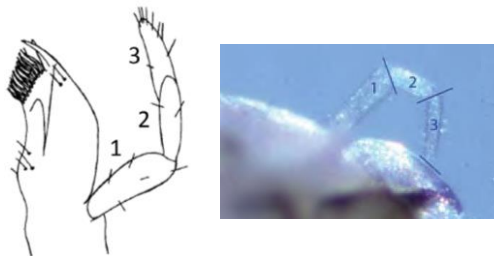


Centroptilum

Incisors of mandible usually
separated to base



Maxillary palp
segment 3 **as long**
or longer than 2



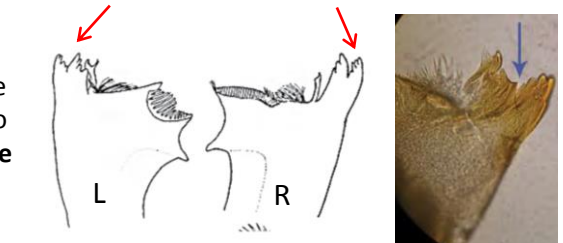
Cerci w/ lateral setae
absent from distal ¼



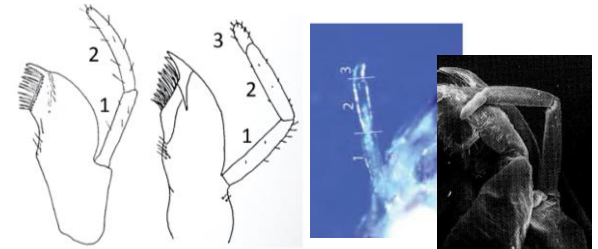
Gills
simple

Procloeon

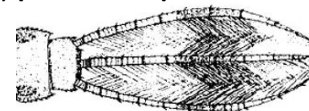
Incisors of mandible
usually separated to
< ½ distance to base



Maxillary palp
segment 3
shorter than 2
(when present)



Cerci w/ lateral setae
usually **present to tip**

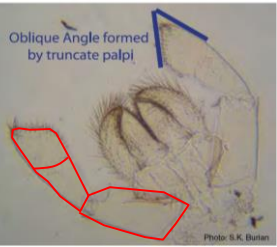


Gills
usually
compound

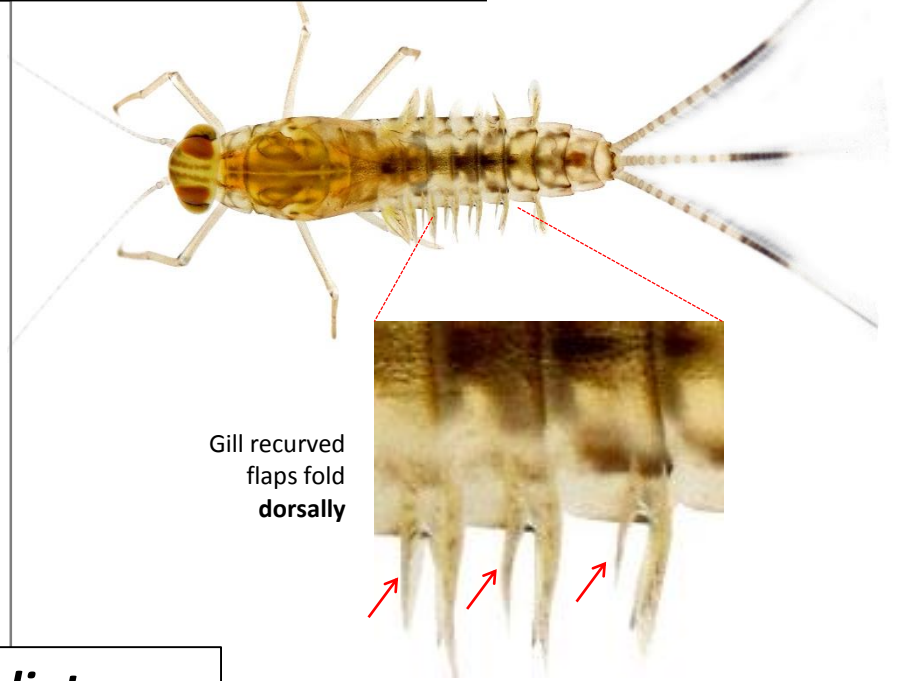


Ephemeroptera: Baetidae

- from keys and descriptions in Merritt, Cummins & Berg 2008, and EPA-260-R-08-014 2008 report; uncredited online photos; by M. Dobrin, 2017



Labial palps
3-segmented,
obliquely truncate



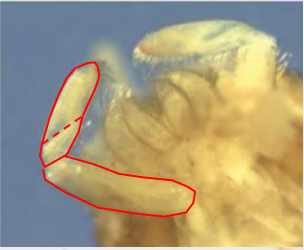
Cloeon dipterum



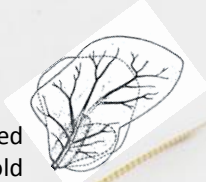
- from keys and descriptions in Merritt, Cummins & Berg 2008, and EPA-260-R-08-014 2008 report; uncredited online photos; by M. Dobrin, 2017

Ephemeroptera: Baetidae

- from keys and descriptions in Merritt, Cummins & Berg 2008, and EPA-260-R-08-014 2008 report; uncredited online photos; by M. Dobrin, 2017



• Labial palps appear 2-segmented; long & spoon-shaped



Gill recurved flaps fold ventrally



Hind wing pads present

Callibaetis



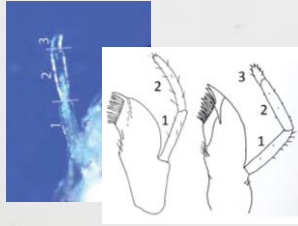
- from keys and descriptions in Merritt, Cummins & Berg 2008, and EPA-260-R-08-014 2008 report; uncredited online photos; by M. Dobrin, 2017

Ephemeroptera: Baetidae

- from keys and descriptions in Merritt, Cummins & Berg 2008, and EPA-260-R-08-014 2008 report; uncredited online photos; by M. Dobrin, 2017



Apex of labial palps **simple** and **truncate**

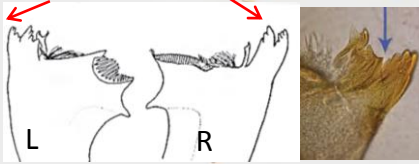


cerci with distinct bands every 3rd to 5th segment

Incisors of mandible usually separated to < ½ distance to base

Gills usually compound

lateral setae usually present to tip



Procloeon



- from keys and descriptions in Merritt, Cummins & Berg 2008, and EPA-260-R-08-014 2008 report; uncredited online photos; by M. Dobrin, 2017

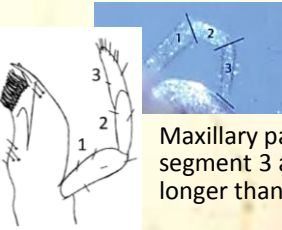
Ephemeroptera: Baetidae

- from keys and descriptions in Merritt, Cummins & Berg 2008, and EPA-260-R-08-014 2008 report; uncredited online photos; by M. Dobrin, 2017



Apex of labial palps **simple** and **truncate**

Cerci w/ lateral setae absent from distal ¼

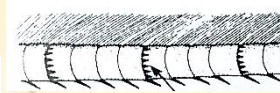


Maxillary palp segment 3 as long or longer than 2

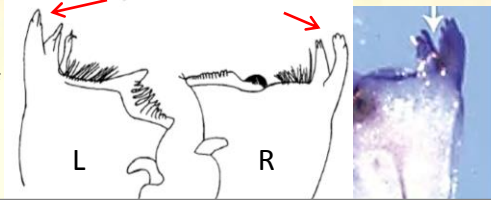
Gills simple



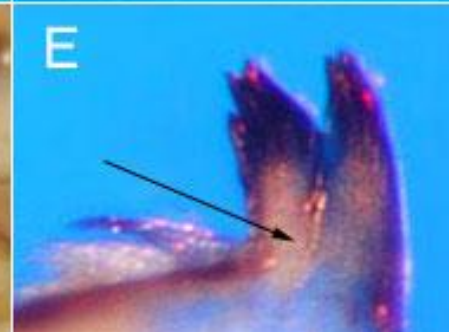
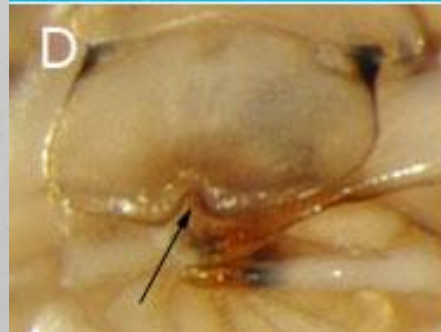
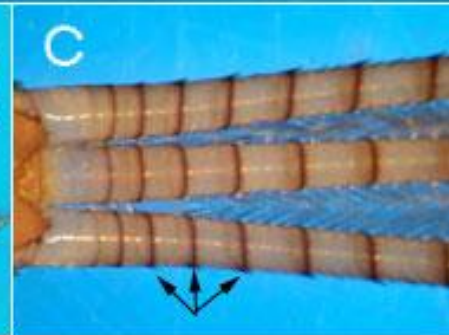
Cerci with **distinct bands** every 3rd to 5th segment



Incisors of mandible usually separated to base



Centroptilum



- from keys and descriptions in Merritt, Cummins & Berg 2008, and EPA-260-R-08-014 2008 report; uncredited online photos; by M. Dobrin, 2017